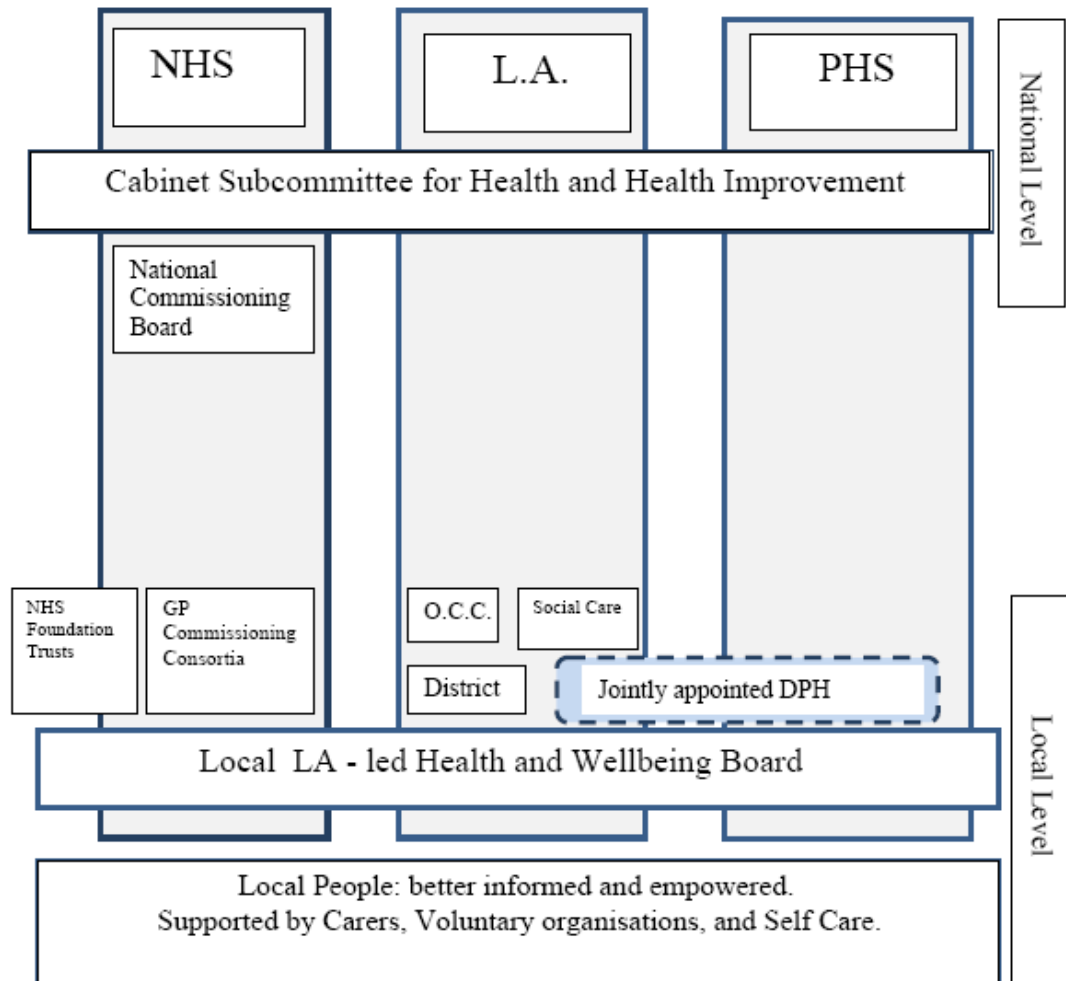


## Diagram Summarising Coalition Government Proposals for the Main Health Organisations



The diagram shows the three main 'pillars' of the 'health system' in coalition thinking, namely the National Health Service (NHS), local authorities (LA) and the National Public Health Service (PHS). The national level is shown at the top of the diagram and the local level at the bottom. The known components of each pillar are set out in boxes on the respective pillar.

The two horizontal boxes which cut across all pillars show the two main mechanisms proposed to join-up public sector action. These are the Cabinet Sub-Committee at national level and the Health and Wellbeing Boards at local level.